

STATE	REFERENCE PROJECT NO	FISCAL YEAR	SHEET NO	LAST SHEET NO
AL	SCP 59-986-26 (WEST)	2026	1	5

# SHELBY COUNTY HIGHWAY DEPARTMENT

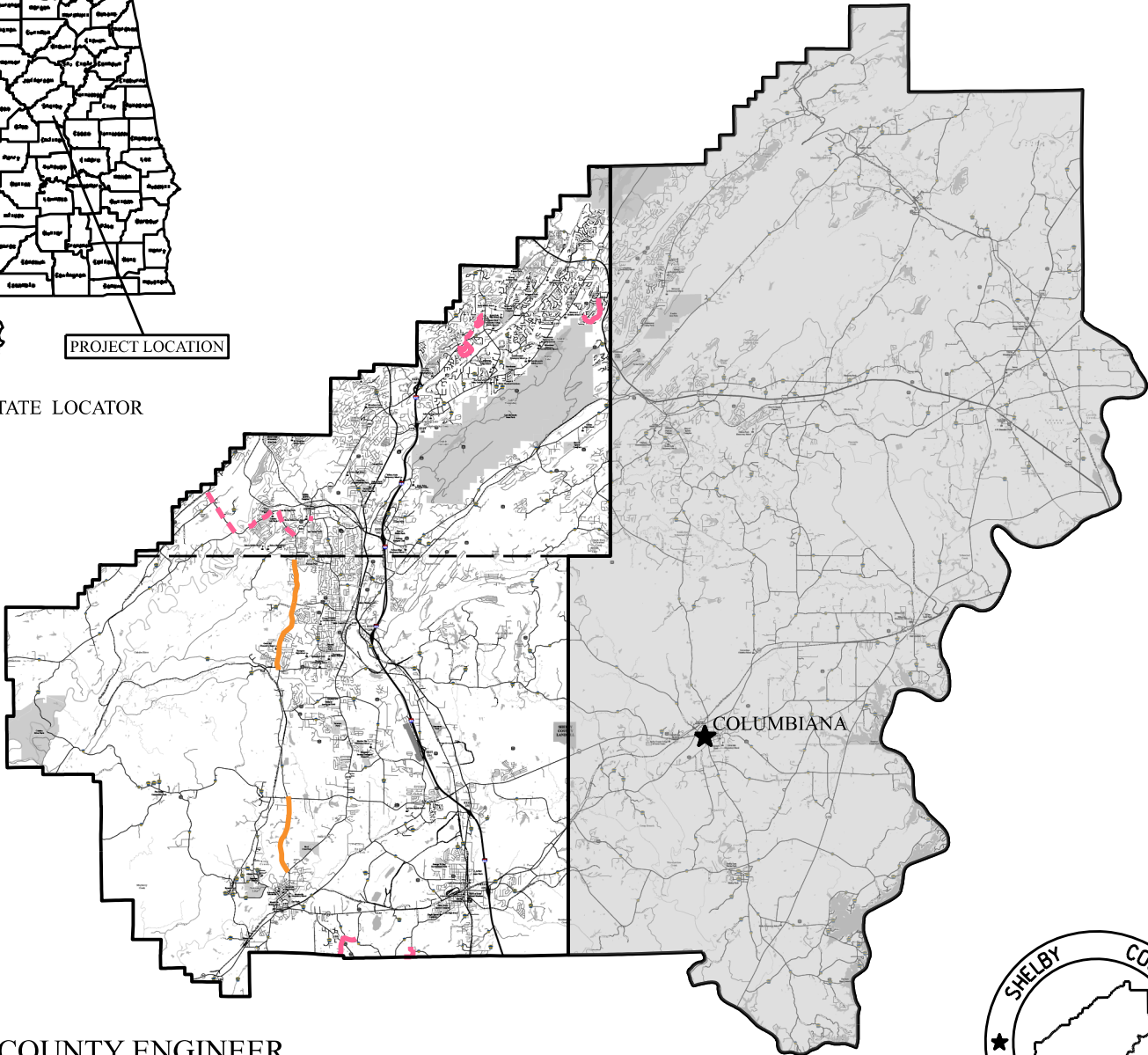
## PLANS OF PROPOSED PROJECT SCP 59-986-26 (WEST)

REPAIR, RESURFACING & TRAFFIC STRIPE FOR VARIOUS COUNTY ROADS  
IN WEST SHELBY COUNTY, AL



PROJECT LOCATION

STATE LOCATOR



COUNTY ENGINEER  
DAVID WILLINGHAM, P.E.



### COUNTY COMMISSIONERS

DISTRICT #1 KEVIN MORRIS	DISTRICT #2 TOMMY EDWARDS
DISTRICT #3 JON PARKER	DISTRICT #4 WARD WILLIAMS
DISTRICT #5 ELWYN BEARDEN	DISTRICT #6 JOSH SISK
DISTRICT #7 LINDSEY ALLISON	DISTRICT #8 RICK SHEPHERD
DISTRICT #9 DR. ROBBIE HAYES	

NOTE : THESE PLANS HAVE BEEN PREPARED TO  
CONFORM WITH ALABAMA DEPARTMENT  
OF TRANSPORTATION STANDARD  
SPECIFICATIONS DATED 2022.

REFERENCE PROJECT NO

FISCAL YEAR

SHEET NO

SCP 59-986-26 (WEST)

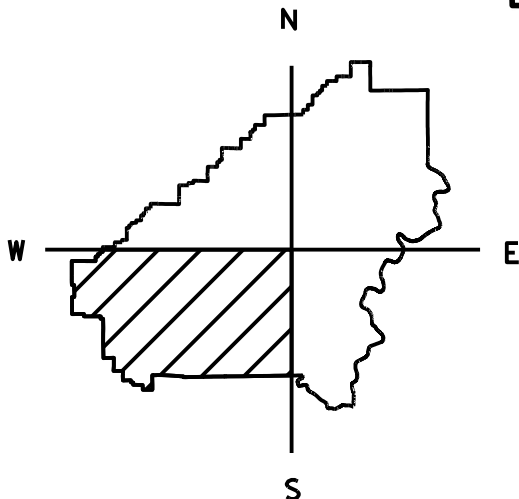
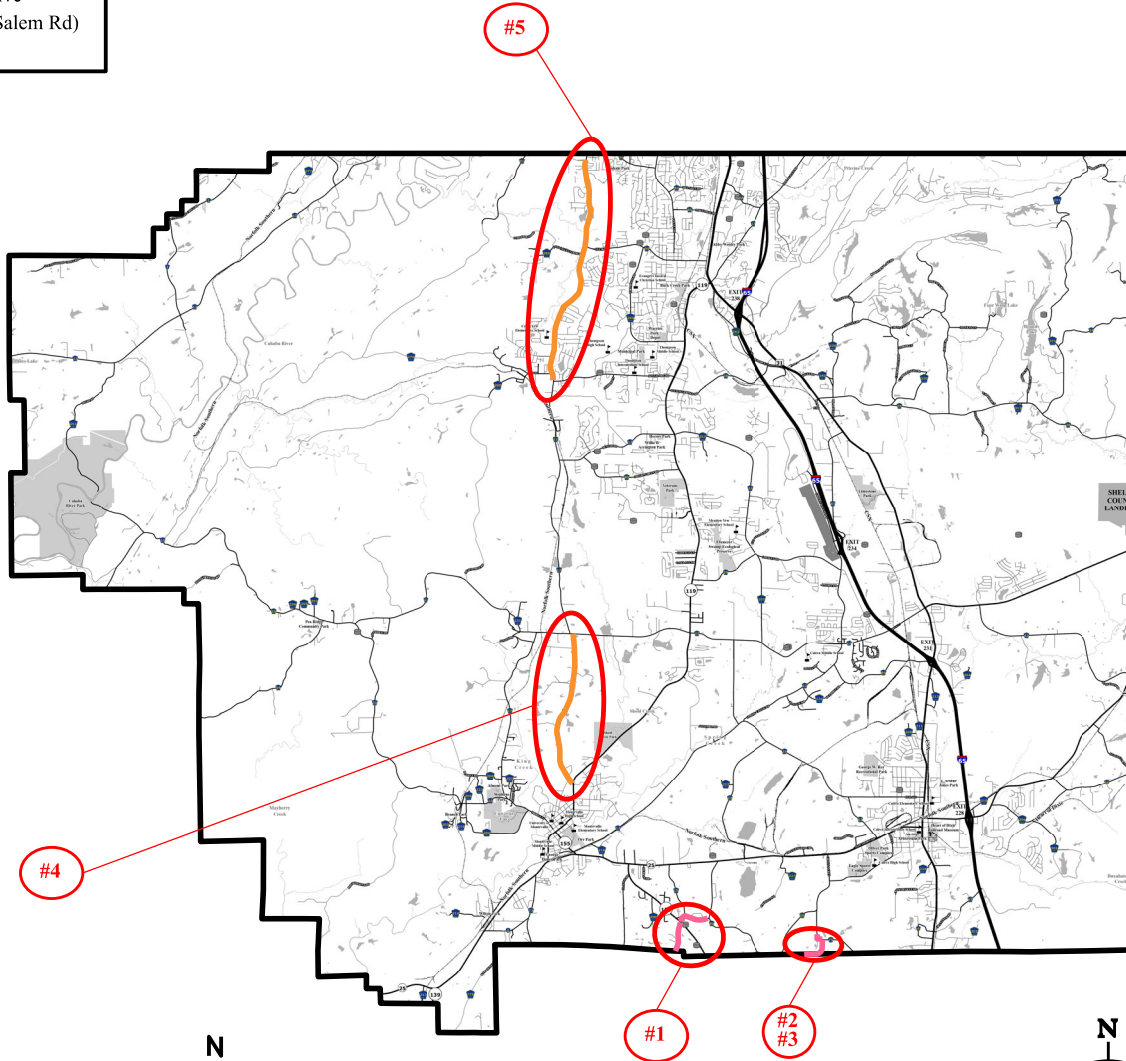
2026

1A

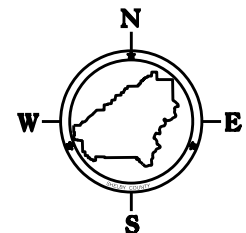
# PROJECT LOCATIONS

## PLANS OF PROPOSED PROJECT SCP 59-986-26 (WEST)

#1W	CR-18
#2W	CR-201
#3W	Moss Drive
#4W	CR-15 (Salem Rd)
#5W	CR-17



COUNTY LOCATOR



NOT TO SCALE

### LEGEND

PROPOSED PAVING



REBUILD



REFERENCE PROJECT NO	FISCAL YEAR	SHEET NO
SCP 59-986-26 (WEST)	2026	1B

# PROJECT LOCATIONS PLANS OF PROPOSED PROJECT SCP 59-986-26 (WEST)

- #6AW

CR-52
- #6BW

CR-52 (Striping Only)
- #7W

Hillandell Drive
- #8W

Stevens Creek Road
- #9W

Mountain View Circle
- #10W

Mountain View Parkway
- #11W

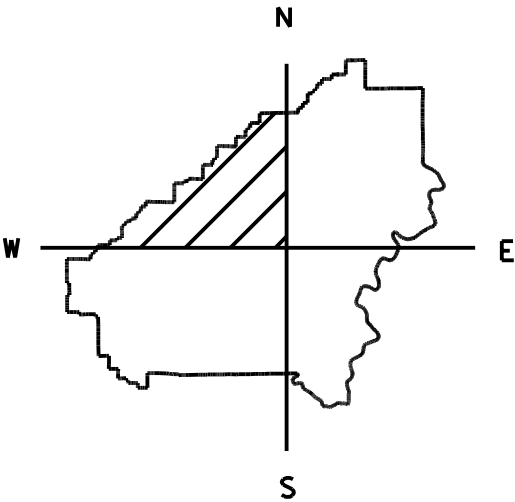
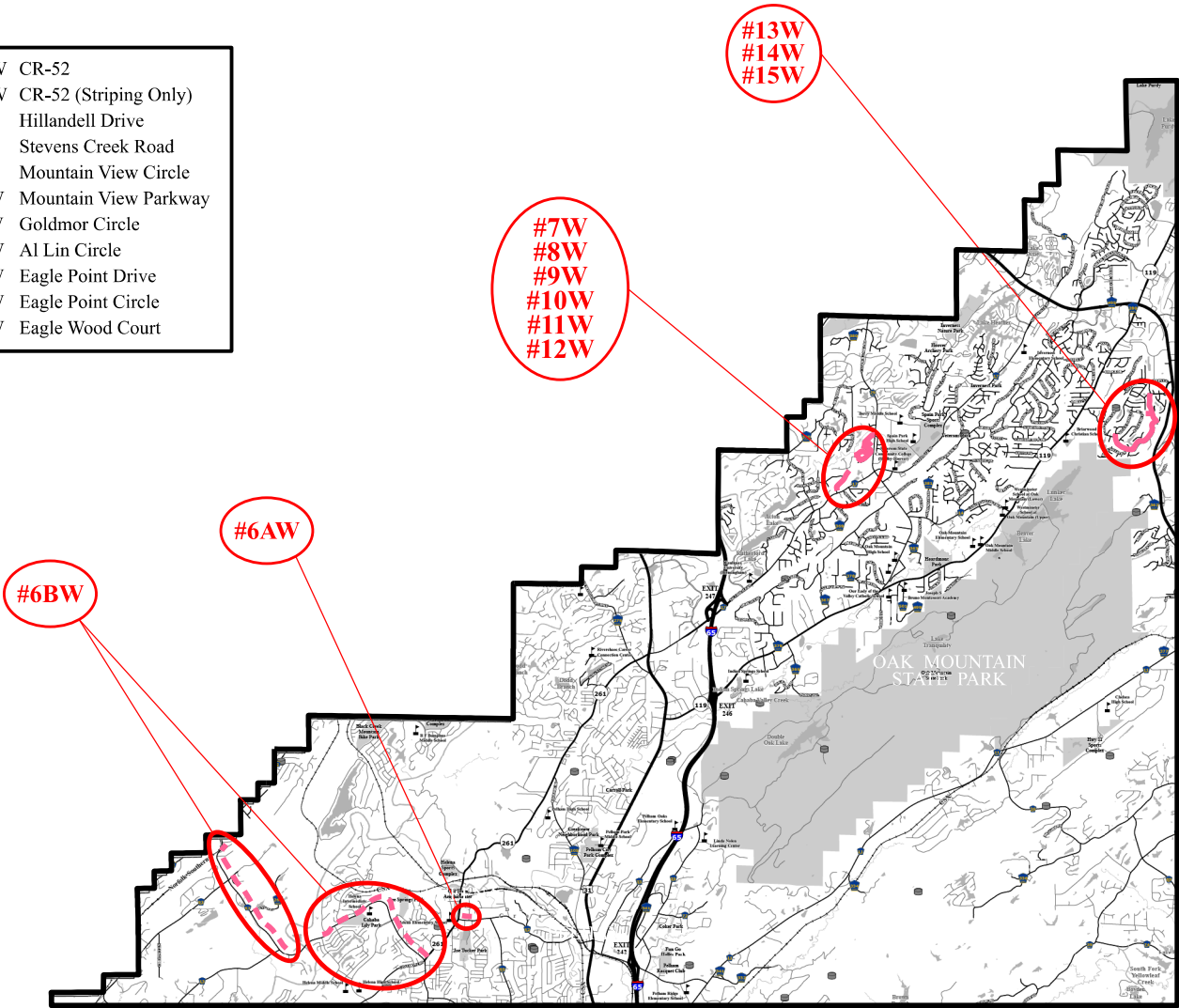
Goldmor Circle
- #12W

Al Lin Circle
- #13W

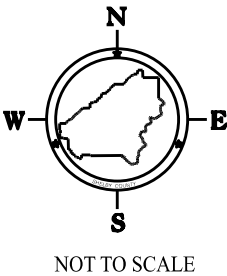
Eagle Point Drive
- #14W

Eagle Point Circle
- #15W

Eagle Wood Court



COUNTY LOCATOR



LEGEND	
PROPOSED PAVING	
STRIPING ONLY	
REBUILD	

REFERENCE PROJECT NO	FISCAL YEAR	SHEET NO
SCP 59-986-26 (WEST)	2026	1C

**INDEX TO SHEETS**  
**PROJECT NO. SCP 59-986-26 (WEST)**  
**SHELBY COUNTY**

SHEET NO. 1	TITLE SHEET
SHEET NO. 1A-1B	PROJECT LOCATIONS
SHEET NO. 1C	INDEX TO SHEETS
SHEET NO. 2-2D	TYPICAL SECTIONS
SHEET NO. 2E	UNIT DESCRIPTIONS
SHEET NO. 2F-2G	PROJECT NOTES
SHEET NO. 2H-2I	TRAFFIC CONTROL NOTES
SHEET NO. 3	SUMMARY OF QUANTITIES
SHEET NO. 3A-3D	SUMMARY OF QUANTITIES PER UNIT
SHEET NO. 3E-3F	TRAFFIC SIGNAL LOOP DETECTOR SHEETS
SHEET NO. 4-5	TRAFFIC CONTROL DETAILS

THE FOLLOWING IS A LIST OF STANDARD OR SPECIAL DRAWINGS CONTAINED IN THE ALABAMA DEPARTMENT OF TRANSPORTATION SPECIAL AND STANDARD HIGHWAY DRAWINGS BOOKLET DATED 2026 WHICH APPLY TO THIS PROJECT:

<u>INDEX NO.</u>	<u>DRAWING NO.</u>	<u>DESCRIPTION</u>
20901	MB-209-1	DETAILS OF MOUNTING MAILBOXES (SHEET 1 OF 3)
20902	MB-209-1	DETAILS OF MOUNTING MAILBOXES (SHEET 2 OF 3)
20903	MB-209-1	DETAILS OF MOUNTING MAILBOXES (SHEET 3 OF 3)
68004	TO-107	DETAILS OF INTERSECTION AND TURNOUTS
68019	SSEC-1	STANDARD SUPERELEVATION OF CURVES (SHEET 4 OF 14)
70101	PS-701-6	DETAILS OF TRAFFIC STRIPING FOR TWO LANE HIGHWAYS
70104	197-NPL	DETAILS OF NO PASSING LINES FOR TWO LANE, TWO DIRECTION ROADWAY
70301	TCM-703	PAVEMENT LEGENDS & MARKINGS (SHEET 1 OF 2)
70302	TCM-703	PAVEMENT LEGENDS & MARKINGS (SHEET 2 OF 2)
70308	CW-703	TYPICAL CROSSWALK LAYOUTS AND DETAILS
70311	SC-703	TYPICAL SCHOOL ZONE CROSSING PROTECTION SIGNING AND MARKINGS
70501	PM-705-1	DETAILS OF PAVEMENT MARKERS CLASS A, A-H & B
70504	PM-705-2	DETAILS SHOWING APPLICATION OF PAVEMENT MARKERS
71017	IHS-710-12	DETAILS OF ROADWAY SIGN POST (SMALL CHANNEL AND TUBULAR SECTION)
71032	IHS-710-21	DETAILS FOR LOCATION AND MOUNTING STANDARD FLAT PANEL SIGNS ON U-CHANNEL AND TUBULAR POSTS
71069	SHS-10	STANDARD HIGHWAY SIGNS
71090	SHS-26	STANDARD HIGHWAY SIGNS
71091	SHS-27	STANDARD HIGHWAY SIGNS
71092	SHS-28	STANDARD HIGHWAY SIGNS
71093	SHS-29	STANDARD HIGHWAY SIGNS
71094	SHS-30	STANDARD HIGHWAY SIGNS
71095	SHS-31	STANDARD HIGHWAY SIGNS
73030	T.S.D.-730-11	LOOP WIRE INSTALLATION
73501	RRX-107-1	RAILROAD CROSSING PASSIVE WARNING - SIGNS AND PAVEMENT MARKINGS
73504	RRX-107-2	RAILROAD CROSSING ACTIVE WARNING - SIGNS AND PAVEMENT MARKINGS
73507	RRX-107-3	DIMENSIONS FOR RAILROAD CROSSING SIGNS, SIGNALS, AND MARKINGS
74007	TCD-100	DETAILS FOR TRAFFIC CHANNELIZATION DEVICES
74201	PCMS-710	DETAILS OF PORTABLE CHANGEABLE MESSAGE SIGNS (SHEET 1 OF 3)
74202	PCMS-710	DETAILS OF PORTABLE CHANGEABLE MESSAGE SIGNS (SHEET 2 OF 3)
74203	PCMS-710	DETAILS OF PORTABLE CHANGEABLE MESSAGE SIGNS (SHEET 3 OF 3)

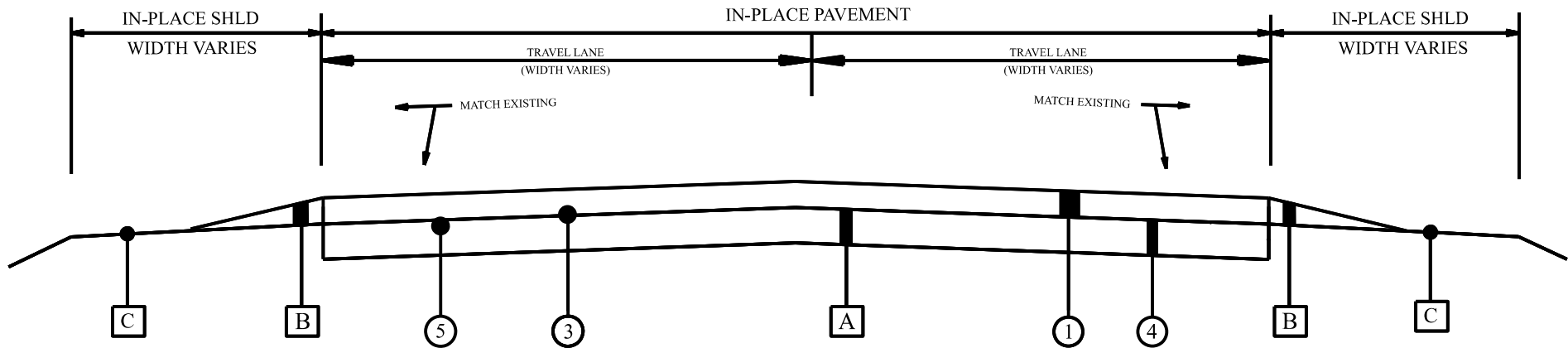
PROJECT NOTES: 201,202,203,204,205,206,  
207,213,214,215,216,218,  
219,221,222,223

TYPICAL SECTION  
PROJECT NO. SCP 59-986-26 (WEST)  
SHELBY COUNTY

PROJECT NUMBER	FISCAL YEAR	SHEET NO.	LAST SHEET
SCP 59-986-26 (WEST)	2026	2	5

TYPICAL SECTION  
APPLIES TO UNITS:

1W	CR-18	5W	CR-17
2W	CR-201		
3W	Moss Drive		
4W	CR-15 (Salem Road)		



LEGEND

ITEM	UNIT	DESCRIPTION
① 424A-361	TON	REQ'D SUPERPAVE BITUMINOUS CONCRETE WEARING SURFACE LAYER, 3/4" MAXIMUM AGGREGATE SIZE MIX, ESAL RANGE C/D (165-185 LBS/SY: REFER TO SHEET 2E FOR RATES)
③ 401B-111	SQ YD	REQ'D BITUMINOUS TREATMENT G, CRS-2 (WITH POLYMER ADDITIVE)
④ 424B-656	TON	REQ'D SUPERPAVE BITUMINOUS CONCRETE UPPER BINDER LAYER, PATCHING, 1 1/2" MAXIMUM AGGREGATE SIZE MIX, ESAL RANGE C/D (440 LBS/SY OR AS DIRECTED BY ENGINEER)
⑤ 424B-658	TON	REQ'D SUPERPAVE BITUMINOUS CONCRETE UPPER BINDER LAYER, LEVELING, 3/4" MAXIMUM AGGREGATE SIZE MIX, ESAL RANGE C/D (THICKNESS VARIES AS DIRECTED BY ENGINEER)
A		IN-PLACE PAVEMENT (RETAIN & OVERLAY)
B		CONTRACTOR SHALL BE RESPONSIBLE FOR TEMPORARY DROP-OFFS; PERMANENT SHOULDER WORK TO BE PERFORMED BY SHELBY COUNTY (REFER TO SHEET 5)
C		IN-PLACE SHOULDER (RETAIN)

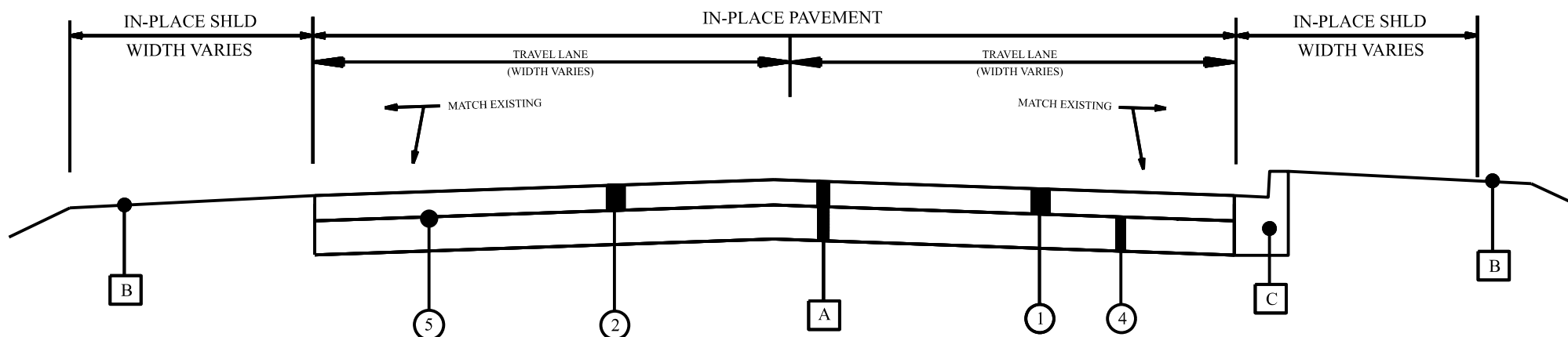
NOT TO SCALE

PROJECT NOTES: 201,202,204,205,206,207  
213,214,215,216,218,219  
221,222,223,227,229

**TYPICAL SECTION**  
**PROJECT NO. SCP 59-986-26 (WEST)**  
**SHELBY COUNTY**

PROJECT NUMBER	FISCAL YEAR	SHEET NO.	LAST SHEET
SCP 59-986-26 (WEST)	2026	2A	5

**TYPICAL SECTION**      **6AW CR-52**  
**APPLIES TO UNITS:**



**LEGEND**

ITEM	UNIT	DESCRIPTION
① 424A-361	TON	REQ'D SUPERPAVE BITUMINOUS CONCRETE WEARING SURFACE LAYER, 3/4" MAXIMUM AGGREGATE SIZE MIX, ESAL RANGE C/D (165 LBS/SY)
② 408A-052	SQ YD	REQ'D PLANING EXISTING PAVEMENT (APPROXIMATELY 1.10" THRU 2.0" THICK) (PLANE APPROXIMATELY 1.5") (FULL WIDTH OF ROADWAY)
④ 424B-656	TON	REQ'D SUPERPAVE BITUMINOUS CONCRETE UPPER BINDER LAYER, PATCHING, 1 1/2" MAXIMUM AGGREGATE SIZE MIX, ESAL RANGE C/D (440 LBS/SY OR AS DIRECTED BY THE ENGINEER)
⑤ 424B-658	TON	REQ'D SUPERPAVE BITUMINOUS CONCRETE UPPER BINDER LAYER, LEVELING, 3/4" MAXIMUM AGGREGATE SIZE MIX, ESAL RANGE C/D (THICKNESS VARIES AS DIRECTED BY THE ENGINEER)
A		IN-PLACE PAVEMENT (PLANE, RETAIN, & OVERLAY)
B		IN-PLACE SHOULDER (RETAIN)
C		IN PLACE CURB AND GUTTER (RETAIN)

NOT TO SCALE

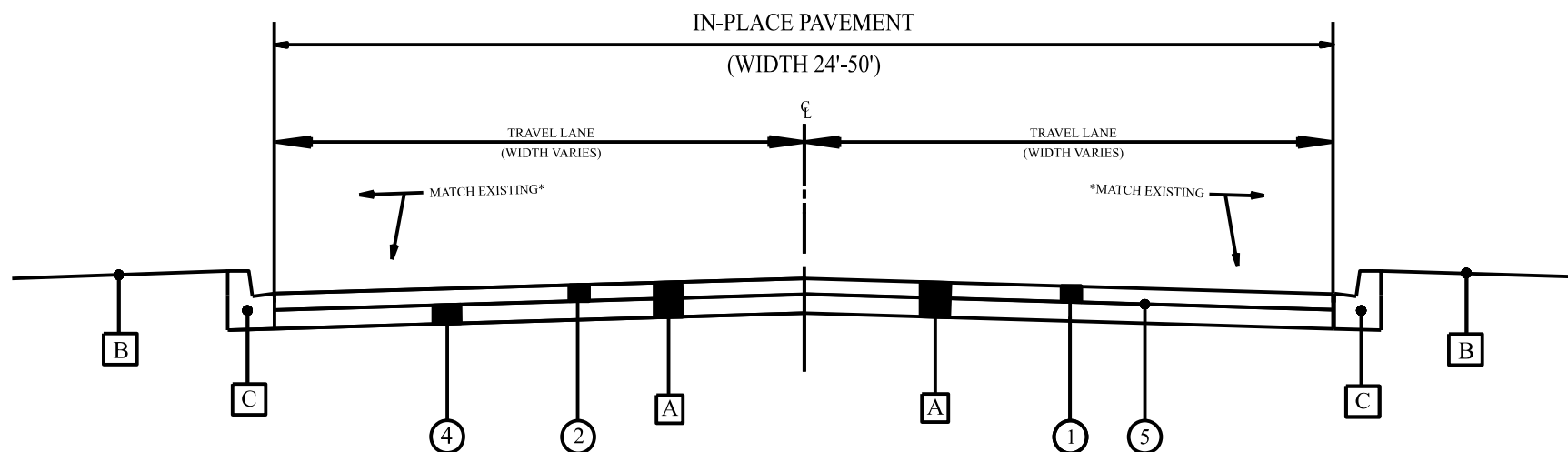
PROJECT NOTES: 201,202,204,205,206,207,213,  
215,216,218,219,221,222,223

**TYPICAL SECTION**  
**PROJECT NO. SCP 59-986-26 (WEST)**  
**SHELBY COUNTY**

PROJECT NUMBER	FISCAL YEAR	SHEET NO.	LAST SHEET
SCP 59-986-26 (WEST)	2026	2B	5

TYPICAL SECTION  
APPLIES TO UNITS:

13W	Eagle Point Drive
14W	Eagle Point Circle
15W	Eagle Wood Court



**LEGEND**

ITEM	UNIT	DESCRIPTION
① 424A-340	TON	REQ'D SUPERPAVE BITUMINOUS CONCRETE WEARING SURFACE LAYER, 1/2" MAXIMUM AGGREGATE SIZE MIX, ESAL RANGE A/B (165 LBS/SY)
② 408A-052	SQ YD	REQ'D PLANING EXISTING PAVEMENT (APPROXIMATELY 1.10" THRU 2.0" THICK) (PLANE APPROXIMATELY 1.5") (FULL WIDTH OF ROADWAY)
④ 424B-656	TON	REQ'D SUPERPAVE BITUMINOUS CONCRETE UPPER BINDER LAYER, PATCHING, 1½" MAXIMUM AGGREGATE SIZE MIX, ESAL RANGE C/D (440 LBS/SY OR AS DIRECTED BY ENGINEER)
⑤ 424B-658	TON	REQ'D SUPERPAVE BITUMINOUS CONCRETE UPPER BINDER LAYER, LEVELING, 3/4" MAXIMUM AGGREGATE SIZE MIX, ESAL RANGE C/D (THICKNESS VARIES AS DIRECTED BY THE ENGINEER)
<b>A</b>		IN PLACE PAVEMENT (PLANE, RETAIN, & OVERLAY)
<b>B</b>		IN PLACE SHOULDER (RETAIN)
<b>C</b>		IN PLACE CURB AND GUTTER (RETAIN)

NOT TO SCALE

PROJECT NOTES: 201,202,204,205,206,207,213,  
215,216,218,219,221,222,223

TYPICAL SECTION  
PROJECT NO. SCP 59-986-26 (WEST)  
SHELBY COUNTY

PROJECT NUMBER	FISCAL YEAR	SHEET NO.	LAST SHEET
SCP 59-986-26 (WEST)	2026	2C	5

TYPICAL SECTION  
APPLIES TO UNITS:

- 7W

Hillandell Drive
- 8W

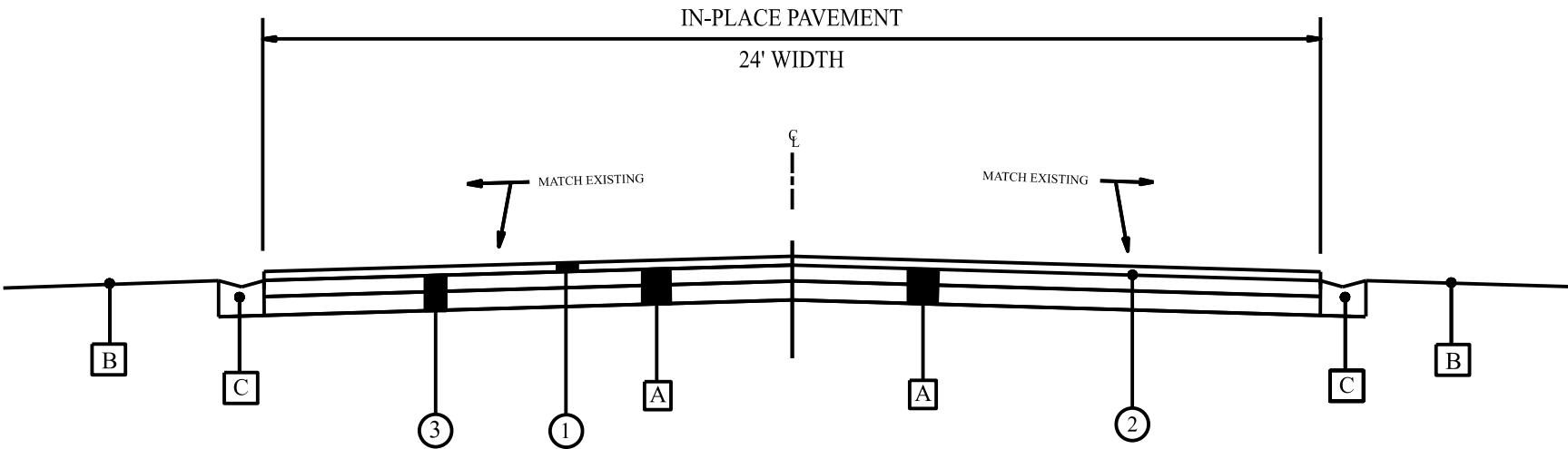
Stevens Creek Road
- 9W

Mountain View Circle
- 10W

Mountain View Parkway
- 11W

Goldmor Circle
- 12W

Al Lin Circle



LEGEND

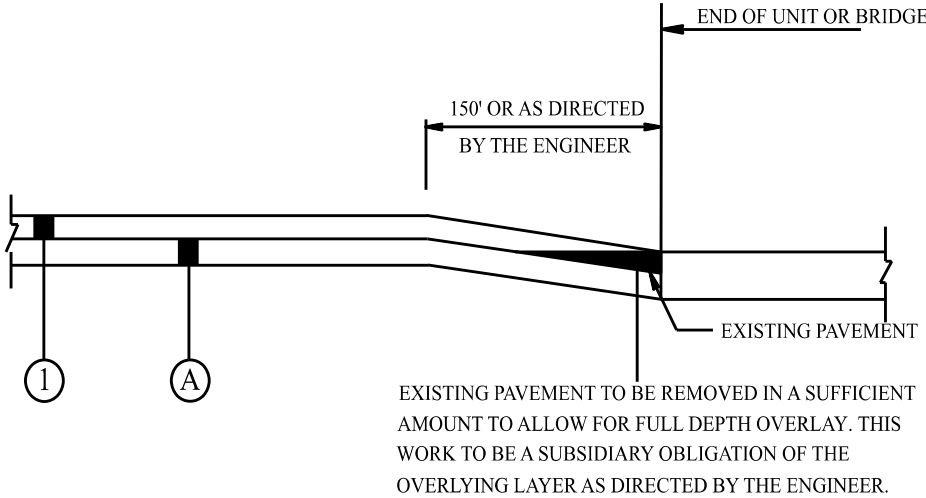
ITEM	UNIT	DESCRIPTION
① 424A-336	TON	REQ'D SUPERPAVE BITUMINOUS CONCRETE WEARING SURFACE LAYER, 3/8" MAXIMUM AGGREGATE SIZE MIX, ESAL RANGE A/B (90 LBS/SY)
② 424B-658	TON	REQ'D SUPERPAVE BITUMINOUS CONCRETE UPPER BINDER LAYER, LEVELING, 3/4" MAXIMUM AGGREGATE SIZE MIX, ESAL RANGE C/D (THICKNESS VARIES AS DIRECTED BY THE ENGINEER)
③ 424B-656	TON	REQ'D SUPERPAVE BITUMINOUS CONCRETE UPPER BINDER LAYER, PATCHING, 1½" MAXIMUM AGGREGATE SIZE MIX, ESAL RANGE C/D (440 LBS/SY OR AS DIRECTED BY ENGINEER)
A		IN PLACE PAVEMENT (RETAIN & OVERLAY)
B		IN PLACE SHOULDER (RETAIN)
C		IN PLACE VALLEY GUTTER (RETAIN)

NOT TO SCALE



TYPICAL SECTION  
PROJECT NO. SCP 59-986-26 (WEST)  
SHELBY COUNTY

PROJECT NUMBER	FISCAL YEAR	SHEET NO.	LAST SHEET
SCP 59-986-26 (WEST)	2026	2D	5



SKETCH SHOWING PAVEMENT TIE AT BEGIN/END OF UNIT,  
AT BRIDGE ENDS AND RR X-INGS

LEGEND

ITEM	UNIT	DESCRIPTION
①	424A-361 TON	REQ'D SUPERPAVE BITUMINOUS CONCRETE WEARING SURFACE LAYER, ¾" MAXIMUM AGGREGATE SIZE MIX, ESAL RANGE C/D (SEE SHEET 2E FOR APPLICATION RATES)
Ⓐ		IN-PLACE PAVEMENT (PLANE AS REQUIRED)

NOT TO SCALE

Unit Descriptions					Reference Project No	Fiscal Year	Sheet No
County Named and Numbered Roads							
Unit #	Road Number / Name & Description	Length	Width	Comments	SCP 59-986-26 (West)	2026	2E
1W	CR-18 - From CR-89 West to Chilton County Line	5,850	20	Patch, "G" Treat, Spot Level, Seal 165# 3/4" Mix, Restripe			
2W	CR-201 - From Chilton County Line to CR-75	2,850	20	Patch, "G" Treat, Spot Level, Seal 165# 3/4" Mix, Restripe			
3W	Moss Drive - From CR-75 to CR-201	920	15	"G" Treat, Spot Level, Seal 165# 3/4" Mix, Restripe			
4W	CR-15 (Salem Rd) - From SR-119 to CR-22	14,640	21	Patch, "G" Treat, Spot Level, Seal 165# 3/4" Mix, Restripe	SCP 59-986-26 (West)	2026	2E
5W	CR-17 - From Kent Dairy Road to Hillsboro Parkway	21,780	22-38	Patch, "G" Treat, Spot Level, Seal 185# 3/4" Mix, Restripe			
6AW	CR-52 - From SR-261 to Rolling Mill Street	750	24-36	Patch, Mill, Spot Level, Seal 165# 3/4" Mix, Restripe			
6BW	CR-52 (Striping Only) - From SR-261 to Jefferson County Line (Striping Only)	25,600	24-48	Restripe Only, Long Line Stripe & Pavement Markers			
7W	Hillandell Drive - From Valleydale Road to Brook Haven paving joint	1,960	24	Patch as needed, Thin Lift Overlay 90# 3/8" Mix			
8W	Stevens Creek Road - Altadena South Subdivision, off of Mountain View Parkway	1,362	24	Thin lift overlay 90# 3/8" Mix			
9W	Mountain View Circle - Altadena South Subdivision, off of Mountain View Parkway	240	24	Thin lift overlay 90# 3/8" Mix			
10W	Mountain View Parkway - Altadena South Subdivision, off of Caldwell Mill Road	3,520	24	Patch as needed, Thin lift overlay 90# 3/8" Mix	SCP 59-986-26 (West)	2026	2E
11W	Goldmor Circle - Altadena South Subdivision, off of Mountain View Parkway	670	24	Thin lift overlay 90# 3/8" Mix			
12W	Al Lin Circle - Altadena South Subdivision, off of Mountain View Parkway	350	24	Thin lift overlay 90# 3/8" Mix			
13W	Eagle Point Drive - From Eagle Point Circle to Eagle Point Parkway	2,420	24	Mill, Patch, Seal 165# 1/2" Mix, Restripe			
14W	Eagle Point Circle - From Eagle Crest Road to Eagle Point Drive	5,190	24	Mill, Patch, Seal 165# 1/2" Mix, Restripe			
15W	Eagle Wood Court - From Eagle Point Drive to Roads End (West of Intersection)	500	24	Mill, Patch, Seal 165# 1/2" Mix, Restripe			

REFERENCE PROJECT NO	FISCAL YEAR	SHEET NO
SCP 59-986-26 (WEST)	2026	2F

**PROJECT NOTES**  
**PROJECT NO. SCP 59-986-26 (WEST)**  
**SHELBY COUNTY**

- 201: THE MINIMUM REQUIREMENTS FOR PAVING OF TURNOUTS SHALL BE AS FOLLOWS, UNLESS OTHERWISE DIRECTED BY PROJECT ENGINEER:
- a. CITY STREETS, COUNTY ROADS AND STATE HIGHWAYS--PAVE TO THE BACK OF RADIUS WITH JOINTS MILLED BY MILLING MACHINE FULL WIDTH AS DESIGNATED BY PROJECT ENGINEER.
  - b. BUSINESS DRIVEWAYS--PAVE TO THE BACK OF THE EXISTING SHOULDER.
  - c. ALL OTHER TURNOUTS (INCLUDING RESIDENTIAL NON-CONCRETE DRIVEWAYS)--PAVE A MINIMUM OF 3'. ALL CONCRETE DRIVEWAYS SHALL BE PAVED A MINIMUM OF 3' AT ENGINEER'S DISCRETION.
  - d. PARTICULAR ATTENTION WILL BE GIVEN TO THE SLOPE OF ALL DRIVES EITHER RESIDENTIAL OR COMMERCIAL TO ASSURE EASY PASSAGE ON AND OFF THE ROADWAY. IT WILL BE THE RESPONSIBILITY OF THE CONTRACTOR TO EITHER MAKE NECESSARY ADJUSTMENTS DURING ONGOING PHASES OF PAVING OPERATION OR ADJUST AT A LATER DATE AS DIRECTED BY THE PROJECT ENGINEER.
- 202: RESURFACING OVERLAYS SHALL MATCH EXISTING SUPERELEVATION OF HORIZONTAL CURVE.
- 203: ALL SHOULDERS ON ALL UNITS SHALL BE CLIPPED AND BROOMED TO THE ENGINEER'S SATISFACTION PRIOR TO ANY AND ALL RESURFACING.
- 204: ALL EXCESS STONE WILL BE THE RESPONSIBILITY OF THE CONTRACTOR TO REMOVE FROM INTERSECTIONS, PARKING LOTS, DRIVEWAYS, AND ALL PUBLIC PROPERTIES. ALL EXCESS STONE SHALL BE REMOVED DAILY, UNLESS OTHERWISE DIRECTED BY THE PROJECT ENGINEER.
- 205: ALL SUBDIVISION UNIT TRUCK LOAD LIMITS SHALL BE IN ACCORDANCE WITH SHELBY COUNTY, TRUCK WEIGHT ORDINANCE (9 TONS PER AXLE). TRUCK WEIGHTS MAY BE RESTRICTED ON OTHER UNITS AT SHELBY COUNTY'S DISCRETION.
- 206: ITEM 424B-658, BITUMINOUS CONCRETE PLANT MIX, LEVELING ¾" MAX ESAL C/D SHALL BE APPLIED AS DIRECTED BY THE PROJECT ENGINEER.
- 207: CONTRACTOR SHALL TIE BEGINNING AND ENDING OF PROJECT AND AT BRIDGE CROSSINGS AS SHOWN IN THE SKETCH ON SHEET 2D.
- 208: MOBILIZATION AND CONSTRUCTION FUEL SHALL BE SUBSIDIARY OBLIGATION OF THE CONTRACT.
- 209: EXCESS MATERIAL THAT CANNOT BE USED TO FLUSH SLOPES WITHIN A PROJECT AREA SHALL BE WASTED AS DIRECTED BY THE PROJECT ENGINEER.
- 210: CONTRACTOR IS ULTIMATELY RESPONSIBLE FOR THE CONTINUOUS AND PROPER OPERATION OF ALL EXISTING UTILITIES. THE COUNTY SHALL COORDINATE RELOCATION OF UTILITIES WITH THE AFFECTED UTILITY COMPANIES.
- 211: CONTRACTOR IS RESPONSIBLE FOR MAKING CONTACT WITH LOCAL WATER AUTHORITIES AND OBTAINING PERMISSION OR A METER WITH WHICH TO ACQUIRE WATER FOR USE DURING THE PROJECT.
- 212: BASE LAYER COMPACTION SHALL MEET 100% OF THE MAXIMUM THEORETICAL DENSITY OF THE MATERIAL SPECIFIED TO THE SATISFACTION OF THE COUNTY ENGINEER.
- 213: ITEM 405A-000 SHALL BE MECHANICALLY APPLIED TO ACHIEVE UNIFORM DISTRIBUTION. HAND APPLICATION WILL BE ALLOWED ONLY ON TURNOUTS AND INTERSECTIONS.
- 214: UNITS #4W (CR-15) & #5W (CR-17) ARE DESIGNATED AS REBUILD ALABAMA ACT UNITS. THE CONTRACTOR SHALL INSTALL REBUILD ALABAMA SIGNAGE AT EACH END OF THE APPLICABLE UNITS PRIOR TO CONSTRUCTION. DETAILS AND SPECIFICATIONS ON THE REQUIRED SIGN RA-1 ARE INCLUDED ON THE ALDOT STANDARD DRAWING SHS-10, INDEX 71069. THE COST FOR THE PROCUREMENT AND INSTALLATION OF THESE SIGNS IS SUBSIDIARY TO THE CONTRACT.
- 215: ANY MAILBOX RESETS REQUIRED TO COMPLETE THE WORK IN THIS CONTRACT SHALL BE PERFORMED BY THE CONTRACTOR AND IS A SUBSIDIARY OBLIGATION OF THE CONTRACT.
- 216: ANY ROADWAYS WITH A TOTAL WIDTH OF LESS THAN 20' SHALL BE PAVED USING A MATERIAL STRIKE OFF PLATE.

REFERENCE PROJECT NO	FISCAL YEAR	SHEET NO
SCP 59-986-26 (WEST)	2026	2G

# PROJECT NOTES PROJECT NO. SCP 59-986-26 (WEST) SHELBY COUNTY

- 217: IT SHALL BE THE CONTRACTOR'S RESPONSIBILITY TO INVENTORY ALL IN-PLACE STRIPING, MARKINGS AND LEGENDS AND REFERENCE THE LOCATIONS, SO THAT ALL REQUIRED STRIPING, MARKINGS AND LEGENDS SHALL BE PLACED BACK IN THE SAME LOCATIONS AS THEY WERE BEFORE RESURFACING OPERATIONS BEGAN. THE WORK INVOLVED IN INVENTORYING AND REFERENCING SHALL BE A SUBSIDIARY OBLIGATION OF ITEM 701A-230. IF IN-PLACE STRIPING, MARKINGS AND LEGENDS DIFFER FROM REQUIREMENTS ON STANDARD DRAWINGS OR THE MUTCD, THE PROJECT ENGINEER SHALL BE NOTIFIED BEFORE WORK BEGINS.
- 218: ALL PATCHING SHALL BE IN ACCORDANCE WITH ITEM 410.03(c) AND SUBARTICLE 410.09(a) AND COMPLETED PRIOR TO RESURFACING. PATCHES SHALL BE A MINIMUM WIDTH OF 7'-0" AND MINIMUM DEPTH OF 4". THE EXACT LOCATION, WIDTH, LENGTH, AND DEPTH SHALL BE DETERMINED BY THE ENGINEER.
- 219: IF A DROP OFF OCCURES IN A TRANSVERSE DIRECTION DURING THE CONSTRUCTION OF THIS PROJECT, THE CONTRACTOR SHALL CONSTRUCT A TEMPORARY BITUMINOUS WEDGE AS DIRECTED BY THE ENGINEER. THE WORK, IF REQUIRED, SHALL BE PAID FOR AS ITEM 424A-340 OR 424A-361 DEPENDING UPON LOCATION OF WEDGE.
- 220: TEMPORARY TRAFFIC CONTROL MARKINGS SHALL BE USED FOR STOP LINES AND ARROWS ONLY. 4 INCH TEMPORARY STRIPE SHALL BE USED FOR A TEMPORARY CHANNELIZING STRIPE AS DIRECTED BY THE ENGINEER.
- 221: ANY DAMAGE TO IN-PLACE PAVING, CURB AND GUTTER, SIDEWALK, GRASSING, ETC. SHALL BE REPAIRED BY THE CONTRACTOR TO THE SATISFACTION OF THE ENGINEER AT NO COST TO THE PROJECT.
- 222: ANY MANHOLE OR UTILITY RESETS NECESSARY TO COMPLETE THE WORK SHALL BE PERFORMED BY THE CONTRACTOR. THE COST OF THIS WORK SHALL BE A SUBSIDIARY OBLIGATION OF THE CONTRACT.
- 223: REMOVAL OF PAVEMENT MARKERS PRIOR TO RESURFACING SHALL BE PERFORMED BY THE CONTRACTOR. THE COST OF THIS WORK SHALL BE A SUBSIDIARY OBLIGATION OF THE CONTRACT.
- 224: THE PRIME CONTRACTOR SHALL INSTALL A MINIMUM OF 70% OF THE TOTAL TONNAGE REQUIRED FOR ITEM 424A-361 UNLESS OTHERWISE APPROVED BY THE SHELBY COUNTY ENGINEER.
- 225: ALL PAY ITEM WORK SHALL BE PERFORMED WITH A SHELBY COUNTY INSPECTOR ON SITE.
- 226: THE CONTRACTOR WILL HAVE 15 WORKING DAYS AFTER THE CURING PERIOD TO INSTALL PERMANENT TRAFFIC STRIPE AND PAVEMENT MARKERS. IF THESE ITEMS ARE NOT INSTALLED WITHIN 15 WORKING DAYS AFTER THE CURING PERIOD, THE CONTRACTOR SHALL BE RESPONSIBLE FOR APPLYING TEMPORARY APPLICATIONS EVERY MONTH UNTIL THE PERMANENT STRIPE IS COMPLETE. THIS NOTE SHALL ONLY APPLY TO UNITS #1W (CR-18), #2W (CR-201), #4W (CR-15), #5W (CR-17), #6AW (CR-52), #11W (HILLANDELL DRIVE), #17W (EAGLE POINT DRIVE), & #18W (EAGLE POINT CIRCLE).
- 227: UNITS #5W (CR-17), & #6AW (CR-52) SHOULD BE CONSIDERED FOR POSSIBLE NIGHT WORK DUE TO TRAFFIC VOLUMES.
- 228: THE CONTRACTOR SHALL PROVIDE AN OFF-DUTY POLICE OFFICER ON SITE FOR TRAFFIC CONTROL WHEN WORKING AT NIGHT. ANY ADDITIONAL COSTS ASSOCIATED WITH NIGHT WORK INCLUDING, BUT NOT LIMITED TO SIGNS, LIGHTS, POLICE OFFICERS, ETC. SHALL BE THE RESPONSIBILITY OF THE CONTRACTOR AND SHALL BE CONSIDERED A SUBSIDIARY OBLIGATION OF THE CONTRACT. THE CONTRACTOR SHALL NOTIFY THE SHELBY COUNTY HIGHWAY DEPARTMENT A MINIMUM OF ONE MONTH IN ADVANCE OF ANY NIGHT WORK.
- 229: UNITS #4W (CR-15), #5W (CR-17), #6AW (CR-52) #6BW (CR-52 STRIPING ONLY) SHALL HAVE NO LANE CLOSURES ALLOWED BETWEEN THE HOURS OF 6:00-8:30 AM OR 4:00-6:00 PM UNLESS OTHERWISE DIRECTED BY THE PROJECT ENGINEER.
- 230: NO SECTION OF PAVEMENT SHALL BE LEFT OVERNIGHT WITHOUT TRAFFIC STRIPING OR RAILROAD MARKINGS BEING IN PLACE. THIS INCLUDES BITUMINOUS TREATMENT "G" AND FINAL WEARING LAYER.
- 231: UNITS #5W (CR-17) & #6AW (CR-52) SHALL BE INITIATED AND COMPLETED AFTER MAY 22, 2026 AND PRIOR TO AUGUST 7, 2026. THE CONTRACTOR WILL BE ASSESSED A PENALTY OF \$1,000.00 PER DAY FOR EACH DAY THAT PAVING WORK ON THE SUBJECT UNITS IS PERFORMED OUTSIDE OF THE APPROVED DATES.
- 232: THE CONTRACTOR SHALL COMPLETE THE ENTIRE PROJECT BY SEPTEMBER 25, 2026. THE CONTRACTOR IS SUBJECT TO PENALTY AS DEFINED IN ARTICLE 108.11 OF THE ALABAMA STANDARD SPECIFICATIONS 2022 EDITION IF ALL WORK (INCLUDING SUBSIDIARY WORK) IS NOT COMPLETED BY SAID DATE.

REFERENCE PROJECT NO	FISCAL YEAR	SHEET NO
SCP 59-986-26 (WEST)	2026	2H

TRAFFIC CONTROL NOTES  
PROJECT NO. SCP 59-986-26 (WEST)  
SHELBY COUNTY

700. THE TRAFFIC CONTROL PLAN IS DEVELOPED IN CONFORMANCE WITH THE MANUAL ON UNIFORM TRAFFIC CONTROL DEVICES PART 6, 2009 EDITION. THE TRAFFIC CONTROL DEVICES INDICATED REPRESENT CONDITIONS KNOWN DURING PLAN DEVELOPMENT. IN THE EVENT ACTUAL PHYSICAL CONDITIONS WARRANT ADDITIONAL TRAFFIC CONTROL DEVICES, THEY SHALL BE INSTALLED IN CONFORMANCE WITH THE MUTCD PART 6 AS DIRECTED BY THE ENGINEER. COST SHALL BE PAID FOR AS A SUBSIDIARY OBLIGATION.
701. THE CONTRACTOR WILL BE PERMITTED TO DEVELOP HIS OWN TRAFFIC CONTROL PLAN TO BE USED IN LIEU OF THIS TRAFFIC CONTROL PLAN IF APPROVED BY THE ENGINEER. A CONTRACTOR DEVELOPED TRAFFIC CONTROL PLAN SHALL BE A SUBSIDIARY COST OF THE CONTRACT.
702. THE CONTRACTOR SHALL ENSURE THAT ALL TRAFFIC CONTROL DEVICES ARE PLACED AS REQUIRED IN THE TRAFFIC CONTROL PLANS AND ARE IN SERVICEABLE CONDITION AT ALL TIMES.
703. ALL SIGNS AND BARRICADES MAY BE ADJUSTED BY THE ENGINEER FOR THE SAFETY OF THE TRAVELING PUBLIC WHEN NECESSARY.
704. ADDITIONAL SIGNS MAY BE REQUIRED IF DEEMED NECESSARY BY THE ENGINEER. ADDITIONAL ITEMS TO BE A SUBSIDIARY COST OF THE CONTRACT.
705. NO DIRECT PAYMENT WILL BE MADE FOR REMOVING, RELOCATING, OR COVERING OF IN PLACE SIGNS, BARRELS, BARRICADES, OR OTHER TRAFFIC CONTROL DEVICES AS REQUIRED IN THIS TRAFFIC CONTROL PLAN (SEE SPECIAL DRAWING NO. TCD-100 IN THE ALABAMA DEPARTMENT OF TRANSPORTATION'S SPECIAL AND STANDARD HIGHWAY DRAWINGS, 2024 EDITION). COST TO BE A SUBSIDIARY OBLIGATION OF THE CONTRACT.
706. THE QUANTITIES SHOWN ON THE TRAFFIC CONTROL PLAN SHEET ARE CONSIDERED TO BE THE MINIMUM REQUIREMENT FOR HANDLING TRAFFIC AT ANY GIVE TIME DURING CONSTRUCTION.
707. THE CONTRACTOR IS TO REMOVE, RELOCATE, OR COVER DURING CONSTRUCTION AND THEN RESET OR UNCOVER UPON COMPLETION OF A PARTICULAR SECTION ANY CONFLICTING IN-PLACE ROADWAY SIGNS AS DIRECTED BY THE ENGINEER. COST TO BE A SUBSIDIARY OBLIGATION OF THE CONTRACT.
708. ALL CONSTRUCTION SIGNS PLACED BEFORE WORK BEGINS SHALL BE COVERED WITH BLACK PLASTIC OR SOME OTHER SUITABLE MATERIAL SO THAT THE SIGNS ARE NOT VISIBLE UNTIL WORK IS IN PROGRESS.
709. ALL TRAFFIC CONTROL DEVICES SHALL BE A SUBSIDIARY COST OF THE CONTRACT.
710. ALL BLACK ON ORANGE CONSTRUCTION SIGNS SHALL BE FABRICATED USING TYPES IV OR VIII FLUORESCENT ORANGE REFLECTIVE SHEETING MATERIAL FOR THE SIGN BACKGROUND.
711. DURING NON-WORKING HOURS NO EQUIPMENT OR MATERIAL SHALL BE PARKED OR STORED CLOSER THAN 30 FEET TO THE EDGE OF ANY ROADWAY CARRYING TRAFFIC. WHEN THIS IS NOT PRACTICAL, IT SHALL BE PLACED IN AN AREA APPROVED BY THE ENGINEER AND DELINEATED BY REFLECTORIZED DRUMS. THIS INCLUDES STORAGE OF TRAFFIC CONTROL DEVICES SUCH AS TRAILER MOUNTED OR OTHER TEMPORARY SIGNS, BARRICADES, DRUMS, ETC., WHICH ARE NOT IN USE DURING NON-WORKING HOURS. THESE ARE TO BE FURNISHED BY THE CONTRACTOR WITHOUT COST TO SHELBY COUNTY.

REFERENCE PROJECT NO	FISCAL YEAR	SHEET NO
SCP 59-986-26 (WEST)	2026	2I

# TRAFFIC CONTROL NOTES PROJECT NO. SCP 59-986-26 (WEST) SHELBY COUNTY

712. WHERE THE LOCATION OF A REQUIRED SIGN FALLS IN A DRIVEWAY, SIDEWALK, BRIDGE, ETC., OR WHERE THE VISIBILITY OF A SIGN IS LIMITED TO THE TRAVELING PUBLIC, THE LOCATION SHALL BE ADJUSTED AS DIRECTED BY THE ENGINEER.
713. THE CONTRACTOR SHALL PLACE ALL ADVANCE WARNING SIGNS BEFORE PROCEEDING WITH THIS WORK.
714. ALL VEHICLES, EQUIPMENT, PERSONNEL (EXCEPT FLAGGERS), AND THEIR ACTIVITIES, ARE RESTRICTED AT ALL TIMES TO ONE SIDE OF THE PAVEMENT UNLESS OTHERWISE AUTHORIZED BY THE ENGINEER.
715. THE CONTRACTOR SHALL MAINTAIN AT LEAST ONE ACCESS TO BUSINESSES AND RESIDENCES DURING ALL PHASES OF CONSTRUCTION.
716. CONSTRUCTION SIGNS MOUNTED ON TEMPORARY SUPPORTS SHALL BE MOUNTED AT A MINIMUM HEIGHT OF 5 FEET.
717. FLAGGERS SHALL BE PROPERLY ATTIRED, EQUIPPED WITH STAFF MOUNTED STOP/SLOW PADDLES IN SIGHT OF EACH OTHER OR HAVE DIRECT COMMUNICATION AT ALL TIMES. FLAGGER STATION LOCATION MAY BE VARIED FROM THOSE SHOWN BASED ON ROADWAY CONDITIONS AT THE TIME OF THE LANE CLOSURE.
718. FLAGGERS ARE TO BE USED WHEN DIRECTED BY THE ENGINEER. SIGNS SHALL BE PLACED AT THE APPROPRIATE TIME AND SHALL BE COVERED OR REMOVED WHEN FLAGGERS ARE NOT ON DUTY AND DURING NON-WORKING HOURS.
719. FOR MOVING OPERATIONS, THE TRAFFIC CONES MAY BE DELETED IF THE FLAGGERS ARE IN SIGHT OF EACH OTHER OR IF A PILOT CAR IS USED ON A TWO LANE ROADWAY.
720. DURING THE WIDENING OR RESURFACING OF ANY ROADWAY CARRYING TRAFFIC, THE CONTRACTOR SHALL ADVISE THE MOTORISTS OF ANY EDGE OF PAVEMENT DROP-OFFS 3 INCHES OR GREATER BY PLACING SHOULDER DROP-OFF SIGNS EVERY ½ MILE BEGINNING PRIOR TO THE WIDENING OR RESURFACING. REQUIRED SHOULDER WORK TO ELIMINATE THE DROP-OFFS SHALL BE PURSUED IN AN EXPEDITIOUS MANNER FOLLOWING THE WIDENING AND/OR RESURFACING.
721. DURING THE WIDENING OR RESURFACING OF ANY ROADWAY CARRYING TRAFFIC, THE CONSTRUCTION ZONE SHALL NOT BE LONGER THAN 2 MILES AT ANY GIVEN TIME.

Summary of Quantities				Reference Project No	Fiscal Year	Sheet No
Pay Item	Unit	Quantity	Description	SCP 59-986-26 (West)	2026	3
401B111	SY	131,250	G-Treatment (With Polymer Additive)			
405A000	Gal.	6,201	Tack Coat			
408A052	SY	28,543	Planing Existing (Approx. 1.10" thru 2.0")			
410H000	EA	2	Material Remixing Device			
424A336	Ton	1,030	Bit. Wearing Surface 3/8" Max - ESAL (A/B)			
424A340	Ton	1,830	Bit. Wearing Surface 1/2" Max - ESAL (A/B)			
424A361	Ton	11,940	Bit. Wearing Surface 3/4" Max - ESAL (C/D)			
424A370	Ton	425	Widening - Bit. Wearing Surface 3/4" Max - ESAL (C/D)			
424B656	Ton	1,050	Patching - Bit. Upper Binder 1.5" Max - ESAL (C/D)			
424B658	Ton	950	Leveling - Bit. Upper Binder 3/4" Max - ESAL (C/D)			
701A007	Mile	2	Solid White, Class 1, Type A Traffic Stripe (5" Wide)			
701A016	Mile	2	Solid Yellow, Class 1, Type A Traffic Stripe (5" Wide)			
701A227	Mile	30	Solid White, Class 2, Type A Traffic Stripe (5" Wide)			
701A230	Mile	33	Solid Yellow, Class 2, Type A Traffic Stripe (5" Wide)			
701A244	Mile	3	Broken Yellow, Class 2, Type A Traffic Stripe (5" Wide)			
701B207	LF	6,910	Dotted, Class 2, Type A Traffic Stripe			
701C002	Mile	2	Broken Temporary Traffic Stripe (Paint)			
701C003	Mile	52	Solid Temporary Traffic Stripe (Paint)			
703A002	SF	8,094	Traffic Control Markings, Class 2, Type A			
703B002	SF	566	Traffic Control Legends, Class 2, Type A			
703D002	SF	4,044	Temporary Traffic Control Markings (Paint)			
705A030	EA	524	Pavement Markers, Class A-H, Type 2-C			
705A032	EA	2,430	Pavement Markers, Class A-H, Type 1-B			
705A037	EA	1,926	Pavement Markers, Class A-H, Type 2-D			
705A038	EA	1,715	Pavement Markers, Class A-H, Type 2-E			
730H001	LF	550	Loop Wire			

SUMMARY OF QUANTITIES									Reference Project No
Required Asphalt Resurfacing									
Unit #	Road Number / Name	401B111	405A000	408A052	410H000	424A336	424A340	424A361	Fiscal Year
		G-Treatment (With Polymer Additive)	Tack Coat	Planing Existing (Approx. 1.10" thru 2.0")	Material Remixing Device	Bit. Wearing Surface 3/8" Max - ESAL (A/B)	Bit. Wearing Surface 1/2" Max - ESAL (A/B)	Bit. Wearing Surface 3/4" Max - ESAL (C/D)	
		SY	Gal.	SY	EA	Ton	Ton	Ton	
1W	CR-18	13,000	200					1,080	2026
2W	CR-201	6,350	200					530	
3W	Moss Drive	1,540	50					150	
4W	CR-15 (Salem Rd)	34,160	500		1			2,830	
5W	CR-17	76,200	700	4,000	1			7,100	
6AW	CR-52		265	2,650				250	
6BW	CR-52 (Striping Only)								
7W	Hillandell Drive		523			270			
8W	Stevens Creek Road		360			170			
9W	Mountain View Circle		60			30			
10W	Mountain View Parkway		938			430			3A
11W	Goldmor Circle		170			85			
12W	Al Lin Circle		90			45			
13W	Eagle Point Drive		645	6,453			540		
14W	Eagle Point Circle		1,380	13,840			1,170		
15W	Eagle Wood Court		120	1,600			120		
Totals:		131,250	6,201	28,543	2	1,030	1,830	11,940	



SUMMARY OF QUANTITIES								
Required Asphalt Resurfacing								
Unit #	Road Number / Name	424A370	424B656	424B658	701A007	701A016	701A227	701A230
		Widening - Bit. Wearing Surface 3/4" Max - ESAL (C/D)	Patching - Bit. Upper Binder 1.5" Max - ESAL (C/D)	Leveling - Bit. Upper Binder 3/4" Max - ESAL (C/D)	Solid White, Class 1, Type A Traffic Stripe (5" Wide)	Solid Yellow, Class 1, Type A Traffic Stripe (5" Wide)	Solid White, Class 2, Type A Traffic Stripe (5" Wide)	Solid Yellow, Class 2, Type A Traffic Stripe (5" Wide)
		Ton	Ton	Ton	Mile	Mile	Mile	Mile
1W	CR-18		100	100			3	3
2W	CR-201		100	75	2	2		
3W	Moss Drive		25	50				
4W	CR-15 (Salem Rd)	100	200	350			6	5
5W	CR-17	325	250	250			10	10
6AW	CR-52		25				1	1
6BW	CR-52 (Striping Only)						10	10
7W	Hillandell Drive							1
8W	Stevens Creek Road		25					
9W	Mountain View Circle							
10W	Mountain View Parkway		25					
11W	Goldmor Circle							
12W	Al Lin Circle		25					
13W	Eagle Point Drive		75	25				1
14W	Eagle Point Circle		150	100				2
15W	Eagle Wood Court		50					
Totals:		425	1,050	950	2	2	30	33

Reference Project No  
SCP 59-986-26 (West)

Fiscal Year  
2026

Sheet No  
3B

SUMMARY OF QUANTITIES								
Required Asphalt Resurfacing								
Unit #	Road Number / Name	701A244	701B207	701C002	701C003	703A002	703B002	703D002
		Broken Yellow, Class 2, Type A Traffic Stripe (5" Wide)	Dotted, Class 2, Type A Traffic Stripe	Broken Temporary Traffic Stripe (Paint)	Solid Temporary Traffic Stripe (Paint)	Traffic Control Markings, Class 2, Type A	Traffic Control Legends, Class 2, Type A	Temporary Traffic Control Markings (Paint)
		Mile	LF	Mile	Mile	SF	SF	SF
1W	CR-18				6	110		110
2W	CR-201				4	60		60
3W	Moss Drive					60		60
4W	CR-15 (Salem Rd)	1		1	15			
5W	CR-17	1	2,100	1	20	6,650	520	3,000
6AW	CR-52		100		1	320	46	120
6BW	CR-52 (Striping Only)	1	4,710					
7W	Hillandell Drive					200		
8W	Stevens Creek Road					28		28
9W	Mountain View Circle					28		28
10W	Mountain View Parkway					56		56
11W	Goldmor Circle					28		28
12W	Al Lin Circle					28		28
13W	Eagle Point Drive				2	236		236
14W	Eagle Point Circle				4	250		250
15W	Eagle Wood Court					40		40
Totals:		3	6,910	2	52	8,094	566	4,044

Reference Project No  
SCP 59-986-26 (West)

Fiscal Year  
2026

Sheet No  
3C

SUMMARY OF QUANTITIES								
Required Asphalt Resurfacing								
Unit #	Road Number / Name	705A030	705A032	705A037	705A038	730H001		
		Pavement Markers, Class A-H, Type 2-C	Pavement Markers, Class A-H, Type 1-B	Pavement Markers, Class A-H, Type 2-D	Pavement Markers, Class A-H, Type 2-E	Loop Wire		
		EA	EA	EA	EA	LF		
1W	CR-18			148				
2W	CR-201			72				
3W	Moss Drive							
4W	CR-15 (Salem Rd)			370				
5W	CR-17	130	760	720	450			
6AW	CR-52	12	88	12	65	550		
6BW	CR-52 (Striping Only)	382	1,550	407	1,184			
7W	Hillandell Drive		32	5	16			
8W	Stevens Creek Road							
9W	Mountain View Circle							
10W	Mountain View Parkway							
11W	Goldmor Circle							
12W	Al Lin Circle							
13W	Eagle Point Drive			62				
14W	Eagle Point Circle			130				
15W	Eagle Wood Court							
Totals:		524	2,430	1,926	1,715	550		

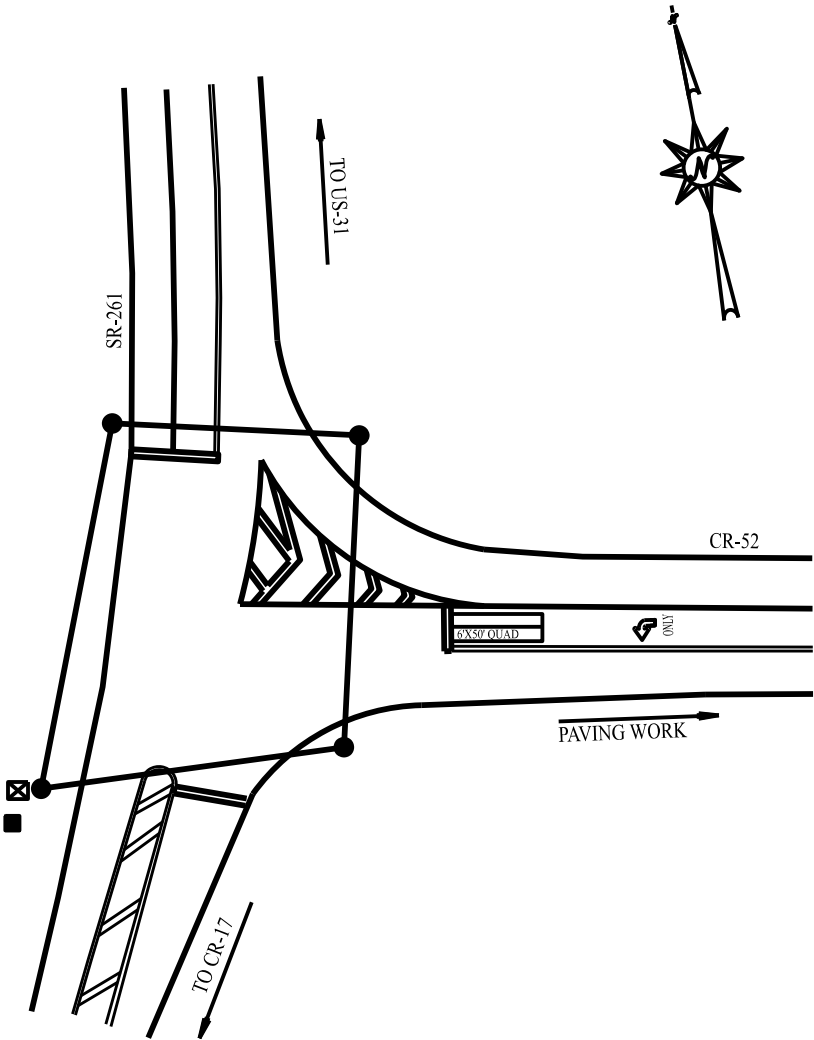
Reference Project No  
SCP 59-986-26 (West)

Fiscal Year  
2026

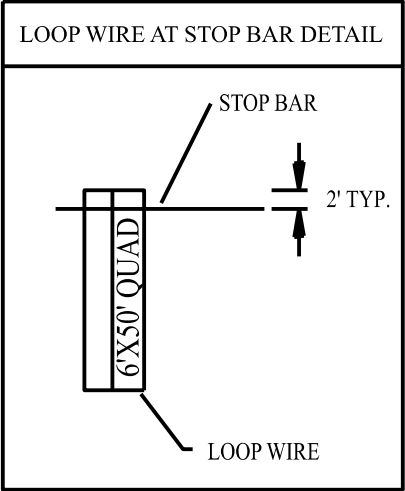
Sheet No  
3D

REFERENCE PROJECT NO	FISCAL YEAR	SHEET NO
SCP 59-986-26 (WEST)	2026	3E

# TRAFFIC SIGNAL LAYOUT CR-52 @ SR-261



NOT TO SCALE



NOTE: CONTRACTOR SHALL REPLACE ALL DAMAGED OR CONFLICTING LOOPS, WIRE, NON-METALLIC CONDUIT OR TRAFFIC JUNCTION BOXES AS REQUIRED BY THE ENGINEER. COSTS ARE A SUBSIDIARY TO APPROPRIATE TRAFFIC SIGNAL ITEMS OF WORK.

## LEGEND

- TRAFFIC SIGNAL POLE (EXISTING)
- JUNCTION BOX (EXISTING)
- ⊠ TRAFFIC SIGNAL CONTROLLER (EXISTING)
- VEHICLE DETECTOR LOOP (REQUIRED)

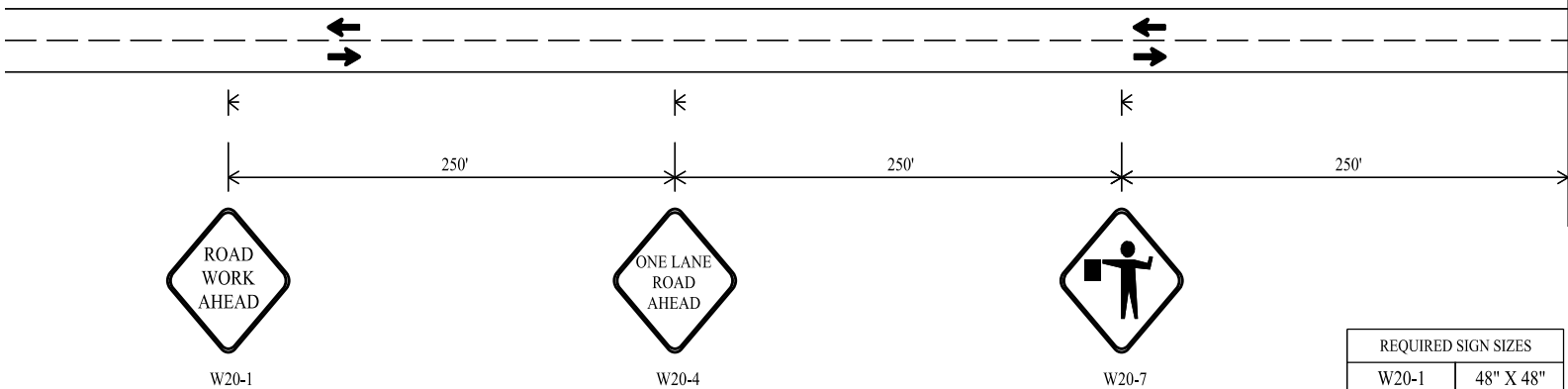
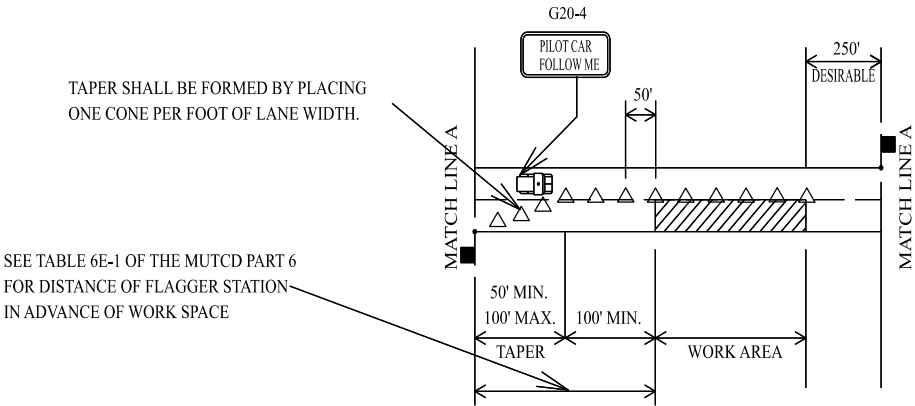
REFERENCE PROJECT NO.	FISCAL YEAR	SHEET NO.
SCP 59-986-26(WEST)	2026	3F

REQUIRED TRAFFIC LOOP DETECTOR INSTALLATION			
Intersection	730H-001 Loop Wire LF	Special or Standard Drawing	Comments
CR-52 @ SR-261	550	A	1- 6'X50' Quad Loop (WB)

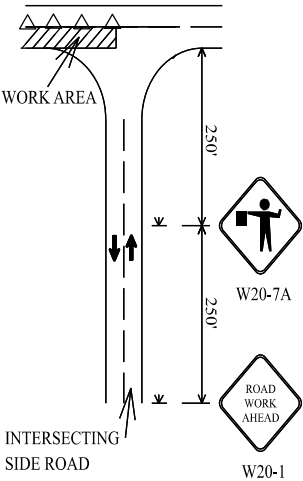
Legend		
A	Special Drawings No.	Index No.
	T.S.D.-730-11	73030

TRAFFIC CONTROL PLAN SHEET

TWO LANE HIGHWAY, ONE LANE CLOSURE



REQUIRED SIGN SIZES	
W20-1	48" X 48"
W20-4	48" X 48"
W20-7	48" X 48"
G20-4	36" X 18"



TRAFFIC CONTROL FOR INTERSECTING SIDE ROADS WITHIN WORK AREA

NOTE: THE W20-1 AND W20-7A SIGNS TO BE USED ON INTERSECTING ROADS SHALL BE 36"X36" IN SIZE. THE TEMPORARY MOUNTED W20-1 ROAD WORK AHEAD SIGN SHOWN ON THE SIDE ROAD WILL NOT BE REQUIRED IF ONE IS ALREADY POST MOUNTED ON THE SIDE STREET.

- LEGEND
- TEMPORARY MOUNTED SIGN
  - POST MOUNTED SIGN
  - CONE WITH BALAST
  - FLAGGER

DESIGN BUREAU SPECIAL DRAWING DETAILS FOR TRAFFIC CONTROL FOR RESURFACING TWO LANE HIGHWAYS		
DRAWN BY: _____	SPECIAL PROJECT DETAIL	INDEX NO.
DATE DRAWN: _____		
SHEET TITLE		ROUTE
		VARIOUS

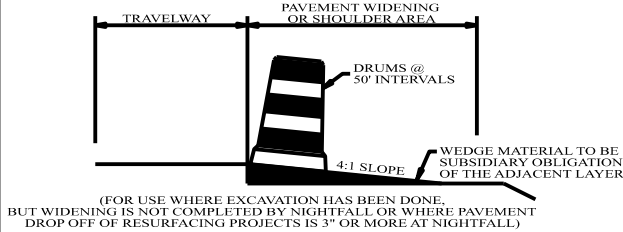
NOT TO SCALE

# TEMPORARY TRAFFIC CONTROL PLAN SHEET

REFERENCE PROJECT NO  
SCP 59-986-26 (WEST)

FISCAL YEAR  
2026

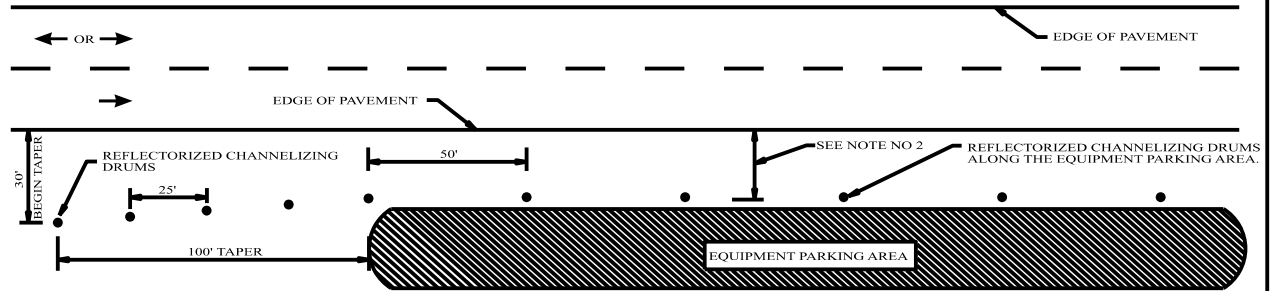
SHEET NO  
5



TYPICAL FOR DROP-OFF AT EDGE OF PAVEMENT

NOTE:  
THE CONTRACTOR IS TO CONSTRUCT A WEDGE OF UNCLASSIFIED EXCAVATION OR CRUSHED AGGREGATE BASE. THE COST OF PLACING AND REMOVAL SHALL BE A SUBSIDIARY OBLIGATION OF THE ADJACENT LAYER.

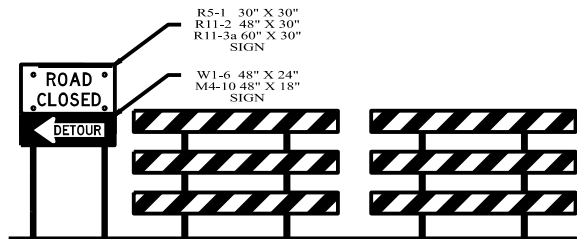
CHANNELIZING DRUMS SHALL BE PLACED AT 50 FT INTERVALS.



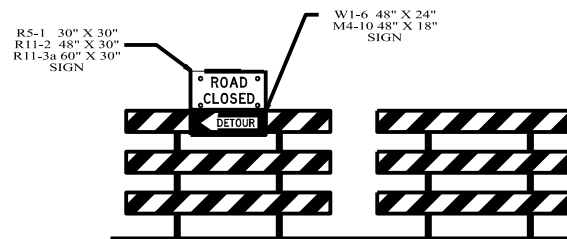
NOTES:

1. SEE GENERAL TRAFFIC CONTROL PLAN NOTE NO. 711.
2. DRUMS TO BE AS FAR AS PRACTICAL FROM EDGE OF PAVEMENT, MINIMUM DESIRABLE DISTANCE IS 15 FEET FOR FREEWAY TYPE FACILITIES AND 10 FEET FOR OTHER FACILITIES. FOR UNUSUAL CONDITIONS, SUCH AS SPECIAL EQUIPMENT OR LIMITED AVAILABLE SPACE, DIMENSIONS LESS THAN DESIRABLE SHALL BE AS DIRECTED BY THE ENGINEER.
3. ALL DEVICES TO BE FURNISHED BY THE CONTRACTOR WITHOUT COST TO THE COUNTY.

DELINEATING DETAIL FOR EQUIPMENT PARKING OR STORING AREA



DETAILS FOR TYPICAL PLACEMENT OF TYPE III BARRICADES INSIDE OF CLEAR ZONE



DETAILS FOR TYPICAL PLACEMENT OF TYPE III BARRICADES OUTSIDE OF CLEAR ZONE

NOTES

1. SLOPE OF STRIPES ON BARRICADES SHALL BE IN ACCORDANCE WITH SECTION 6F.68 OF THE MUTCD AND DRAWING B-107-2.
2. IF SIGNS ARE REQUIRED TO BE USED IN CONJUNCTION WITH TYPE III BARRICADES TO BE PLACED INSIDE THE CLEAR ZONE, THEY SHALL BE POST MOUNTED TO THE SIDE OF THE BARRICADES AS SHOWN.
3. IF ROAD CLOSED OR DETOUR SIGNS ARE REQUIRED TO BE USED WITH TYPE III BARRICADES TO BE PLACED OUTSIDE THE CLEAR ZONE, THEY SHALL BE PLACED ON THE TOP OF THE BARRICADES NEAREST THE DETOUR.

NOT TO SCALE

—SPECIFICATIONS—  
CURRENT ALABAMA DEPARTMENT OF TRANSPORTATION



ALABAMA DEPARTMENT  
OF TRANSPORTATION  
1400 COLLENUM BOULEVARD  
MONTGOMERY, AL 36136-3000

THIS DRAWING REPRESENTS DESIGNS PREPARED FOR USE BY THE ALABAMA DEPARTMENT OF TRANSPORTATION AND IS NOT TO BE COPIED, REPRODUCED, ALTERED, OR USED BY ANYONE, OR ANY ORGANIZATION, WITHOUT THE EXPRESSED WRITTEN CONSENT OF THE ALABAMA DEPARTMENT OF TRANSPORTATION REPRESENTATIVE AUTHORIZED TO APPROVE THIS USE. ANYONE MAKING UNAUTHORIZED USE OF THIS DRAWING MAY BE PROSECUTED TO THE FULLEST EXTENT OF THE LAW.

REVISIONS: 1. Corrected text overlap on 12-8-2021 by D.J.W.

Revised Std Eng: D.J.W.  
DRAWN BY:  
DATE DRAWN:  
REVISED DATE: 12-8-2021

DESIGN BUREAU SPECIAL DRAWING  
STANDARD DETAILS FOR  
TRAFFIC CONTROL PLANS

SPECIAL DRAWING NO  
SPECIAL PROJECT DETAIL

INDEX NO  
2001